



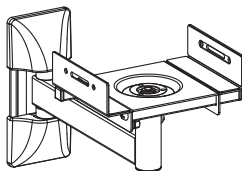
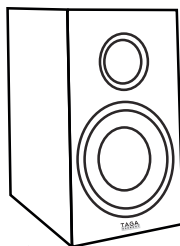
TAGA

HARMONY

TSS-50W

SPEAKER WALL MOUNT

MAX WEIGHT OF
A SPEAKER: 25 KG



Instruction Manual

Edition 11-2024

Important remarks



An exclamation mark in a triangle is intended to alert the user to the presence of important operating and maintenance (servicing) instructions in the literature accompanying the appliance.

PLEASE READ THIS INSTRUCTION MANUAL CAREFULLY BEFORE INSTALLATION AND KEEP IT FOR FUTURE REFERENCE



PACKAGING WARNING

The packaging may contain elements such as plastic, that **should be kept away from small children**.

The thin foil or small elements can stick to the nose and mouth, or may be swallowed and prevent breathing.

Installation



SAFETY PRECAUTIONS

- Do not exceed the maximum speaker weight (25 kgs for 1 speaker mount).
- This product is intended for indoor use and for wall mounting only.
- Before installing the speaker mount, ensure that the wall is suitable to install it and that there are no electrical wires, water, gas or other lines located at the installation location.
- Install the speaker mount on a stable and hard surface, which is strong enough to accommodate the weight of the mount and the speaker.
- During installation tighten screws firmly, but do not overtighten them.
- Use mounting accessories appropriate for the surface and install them in the mounting surface.

Note! Mounting accessories - may not be included with the product and must be purchased separately.

- If your installation requires additional safety precautions (for instance in regions at risk of earthquakes), to prevent the speaker from falling off the mount, we recommend to additionally anchor it to the wall or other permanent construction (using anchoring accessories such as a steel cable, etc.)

Note! Anchoring accessories must be purchased separately and are not delivered with this product.

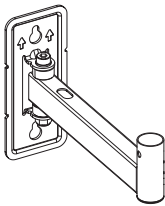
- Keep clear area and distance from moving parts of this product.
- Use only as intended. Do not stand, hang or climb on the product.

TAGA EUROPE:

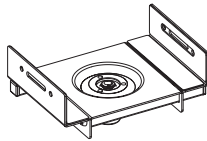
POLPAK POLAND Sp. z o.o.
AL. JEROZOLIMSKIE 331A
05-816 REGUŁY k/WARSZAWY
POLAND

www.TagHarmony.com

Included Elements and Accessories



A (x2)



B (x2)



C (x4)



D (x8)



E (x2)
M6



F (x2)
M6x30



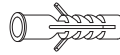
G (x4)
ST4.2x13



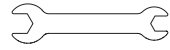
H (x4)
ST4.2x25



I (x4)
ST6.3x55

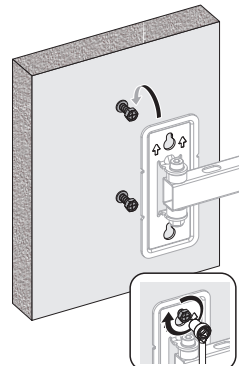
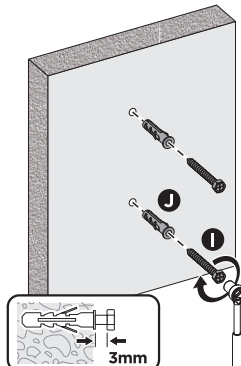
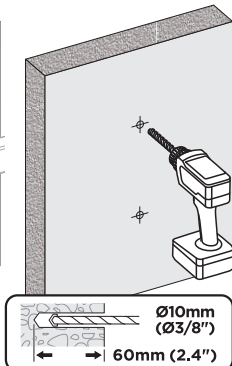
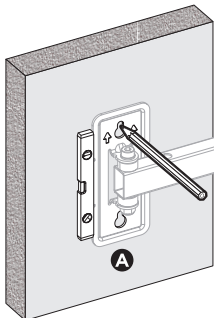
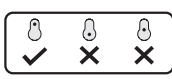
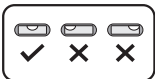
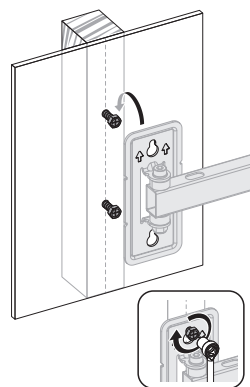
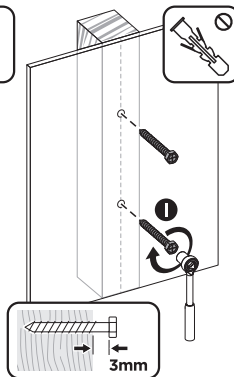
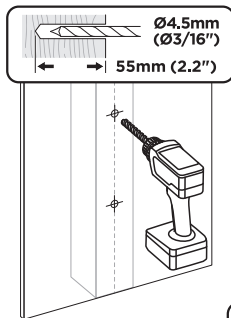
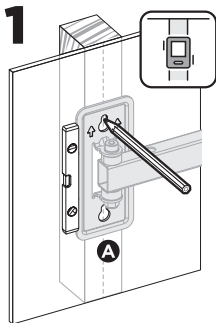


J (x4)
Ø10x45

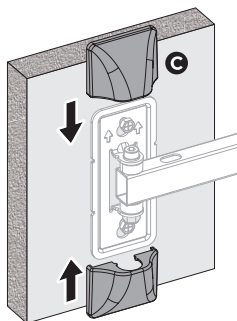


K (x1)
10-13mm

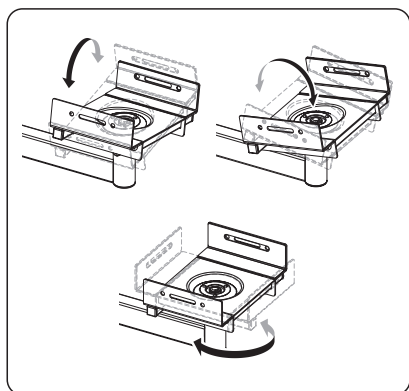
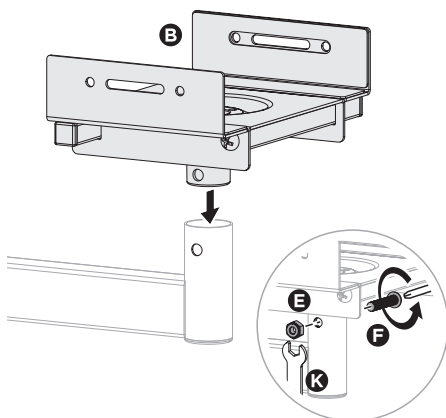
Required Tools (not included)



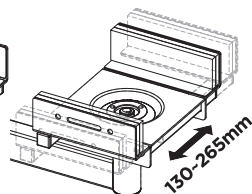
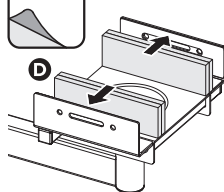
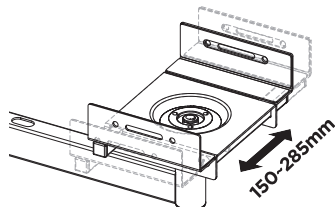
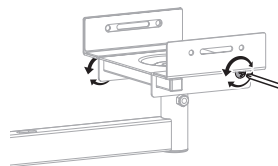
2



3



4



5

You may consider securing the speaker by installing screws **G** or **H** on each side.

