

Kit Contents

Vacuum Tube Amplifier	1EA
Bluetooth® Antenna	1EA
Remote Control	1EA
Batteries AAA	2EA
Power Cord	1EA
Instruction Manual	1EA

Specification

Power Output	2 x 100W, 8 ohm, Class A/B
Vacuum Tubes	12AX7 x 2pcs; 12AU7 x 2pcs
THD	Less or equal 0.1% (1kHz 1W)
Signal/Noise ratio	90dB
Frequency Response	20Hz – 20kHz (+/- 0.5dB)
Inputs	RCA stereo analog: CD, Line, AUX Digital: Optical, Coaxial
Connectivity Wireless	Bluetooth® v4.0
Bluetooth® v4.0	Advanced Audio Distribution Profile A2DP
AC Power, Power Consumption	220-230V 50/60Hz, 380 W
Dimensions (H x W x D)	15.5 x 43 x 37.5 cm
Weight (net)	15.5 kg / pcs.

Bluetooth® is a registered trademark of Bluetooth SIG, Inc.

We reserve the right to change the technical data and the design of the product without notice as a result of further development.

CE Compliance Statement

This product had been subject to the testing requirements for the CE mark, and has been approved to claim the CE mark for the standards,



EN55013:2013
EN55020:2007/A11:2011
EN 61000-3-2:2006+A1:2009+A2:2009
EN 61000-3-3:2013
EN60065:2002+A1:2006+A11:2008+A2:2010+A12:2011

The validity of the CE mark is restricted to those countries where it is legally enforced.



IMPORTANT !

Your product is marked with the symbol as showed on the left .
For EU (European Union) member users :

According to the WEEE(Waste electrical and electronic equipment)
Directive, do not dispose of this product as household waste or commercial
waste
Waste electrical and electronic equipment should be appropriately collected
and recycled as required by practices established for your country.
For information on recycling of this product, please contact you local
authorities, your household waste disposal service or the shop where you
purchased the product .

TAGA EUROPE

POLPAK POLAND Sp.z o.o.
AL.JEROZOLIMSKIE 333A
05-816 REGULY K/WARSZAWY,POLAND
Email:sales@taga-audio.com
Website:www.taga-audio.com

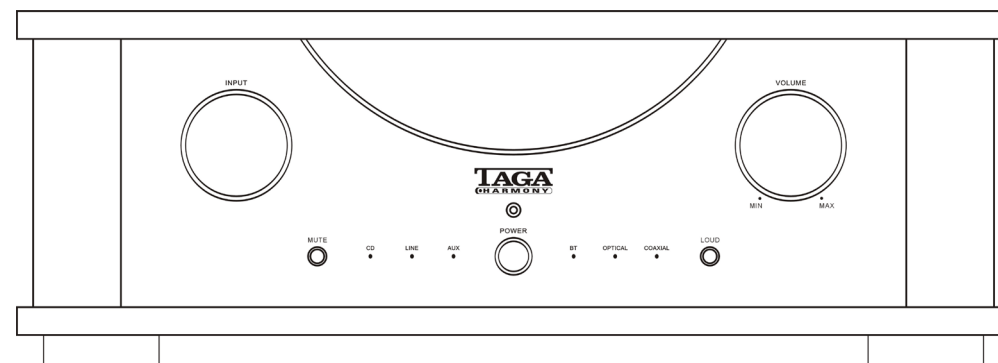
TAGA ASIA

TAGAAudio Technology Company LTD.
3F, Building D1, Shizhou Street Section, Baichen Road,
Shunde District, Foshan City, Guangdong Province,
China,528313
Email:sales@taga-audio.com.cn
Website:www.taga-audio.com.cn



HTA-2000B

HIGH-END HYBRID INTEGRATED AMPLIFIER



Instruction Manual

Introduction

TAGA Harmony amplifiers can boast the finest music performance and perfect matching with most speakers available on the market. They utilize advanced materials, state of the art engineering and innovate design by an international team of professional designers. Our amplifiers deliver pure and distortion-limited power as well as rich sound performance with stunning accuracy, soundstage and sensational dynamics.

The TAGA Harmony HTA-2000B is a full sized high-end hybrid tube / transistor integrated amplifier with a built-in Digital-to-Analog Converter (Coaxial and Optical inputs) and **Bluetooth®** wireless connectivity. It enables connecting a variety of digital and analogue music sources: hi-fi system, computer or video console. Thanks to its hybrid design it provides richness of sound synonymous with pure valve amplification.

This instruction manual provides all the information that you need know about your TAGA Harmony amplifier. Please read it carefully before you start using the unit.


Contents

Safety Instructions	3
System set-up	5
Vacuum Tube Amplifier Instructions	6
<i>Bluetooth®</i>	8
Remote Control Instructions	9
Kit contents, Specification	11


Safety Instructions

IMPORTANT


READ THIS SECTION CAREFULLY BEFORE PROCEEDING!




WARNING
RISK OF ELECTRIC SHOCK
DO NOT OPEN



WARNING: TO REDUCE THE RISK OF ELECTRIC SHOCK, DO NOT REMOVE COVER (OR BACK).NO USER-SERVICEABLE PARTS INSIDE. REFER SERVICING TO QUALIFIED SERVICE PERSONNEL .



The lightning flash with arrowpoint within an equilateral triangle warns of the presence of uninsulated “ dangerous voltage” within the product’s enclosure that may be of sufficient magnitude to constitute a risk of electric shock to persons .



The exclamation point within an equilateral triangle warns users of the presence of important operating and maintenance (servicing) instructions in the literature accompanying the appliance .

WARNING:TO REDUCE THE RISK OF FIRE OR ELECTRIC SHOCK, DO NOT EXPOSE THIS APPARATUS TO RAIN OR MOISTURE , AND OBJECTS FILLED WITH LIQUIDS, SUCH AS VASES , SHOULD NOT BE PLACED ON THIS APPARATUS.

CAUTION: TO PREVENT ELECTRIC SHOCK, MATCH WIDE BLADE OF PLUG TO WIDE SLOT, FULLY INSERT.

CAUTION: FOR CONTINUED PROTECTION AGAINST RISK OF FIRE, REPLACE THE FUSE ONLY WITH THE SAME AMPERAGE AND VOLTAGE TYPE. REFER REPLACEMENT TO QUALIFIED SERVICE PERSONNEL .

WARNING: UNIT MAY BECOME HOT . ALWAYS PROVIDE ADEQUATE VENTILATION TO ALLOW FOR COOLING . DO NOT PLACE NEAR A HEAT SOURCE , OR IN SPACES THAT CAN RESTRICT VENTILATION.

Safety Instructions

1. **Read Instructions** – All the safety and operating instructions should be read before the product is operated.

2. **Retain Instructions** – The safety and operating instructions should be retained for future reference.

3. **Heed Warnings** – All warnings on the product and in the operating instructions should be adhered to.

4. **Follow Instructions** – All operating and use instructions should be followed

5. **Cleaning** – Unplug this product from the wall outlet before cleaning. Do not use liquid cleaners or aerosol cleaners. Use a damp, soft cloth for cleaning .

6. **Water and Moisture** – Do not use this product near water – for example, near a bath tub, wash bowl, kitchen sink, or laundry tub; in a wet basement; or near a swimming pool; and the like .

7. **Accessories** – Do not place this product on an unstable cart , stand, tripod , bracket or table. The product may fall, causing serious injury to a child or adult, and serious damage to the product. Use only with a cart, stand, tripod , bracket or table recommended by the manufacture, or sold with the product. Any mounting of the product should follow manufacture’s instructions and should use a mounting accessory recommended by the manufacture.

8. **Ventilation** – Slots and openings in the cabinet are provided for ventilation and to ensure reliable operation of the product and to protect it from overheating, and these openings must not be blocked or covered. The openings should never be blocked by placing the product on a bed, sofa, rug, or other similar surface. This product should not be placed in a built-in installation such as a bookcase or rack unless proper ventilation is provided or the manufacture’s instructions have been adhered to.

9. **Power Sources** – This product should be operated only from the type of power source indicated on the marking label. If you are not sure of the type of power supply to your home, consult your product dealer or local power company. For products intended to operate from battery power, or other sources, refer to the operating instructions .

10. **Grounding and Polarization** – This product may be equipped with a polarized alternating-current line plug (a plug having one blade wider than the other) . This plug will fit into the power outlet only one way. This is safety feature. If you are unable to insert the plug fully into the outlet, try reversing the plug. If the plug should still fail to fit, contact your electrician to replace your obsolete outlet. Do not defeat the safety purpose of the polarized plug .

11. **Power-Cord Protection** – Power supply cords should be routed so that they are not likely to be walked on or pinched by items placed upon or against them , paying particular attention to cords at plugs, convenience receptacles, and the point where they exit from the product.

12. **Lightning** – For added protection for this product during a lightning storm, or when it is left unattended and unused for long periods of time , unplug it from the wall outlet and disconnect the antenna or cable systems. This will prevent damage to the product due to lightning and power-line surges

13. **Overloading** – Do not overload wall outlets, extension cords , or integral convenience receptacles as this can result in a risk of fire or electric shock

14. **Object and Liquid Entry** – Never push objects of any kind into this product through openings as they may touch dangerous voltage points or short-out parts that could result in a fire or electric shock . Do not expose this apparatus to dripping or splashing, and ensure that no objects filled with water , such as vases , are placed on the apparatus .

15. **Servicing** – Do not attempt to service this product yourself as opening or removing covers may expose you to dangerous voltage or other hazards. Refer all servicing to qualified service personnel.

16. **Damage Requiring Service** – Unplug this product from wall outlet and refer servicing to qualified personnel under the following **conditions**:
 - When power supply cord or plug is damaged;
 - If liquid has been spilled, or objects have fallen into product;
 - If the product has been exposed to rain or water;
 - If the product does not operate normally by following the operating instructions. Adjust only those controls that are covered by the operating instructions as an improper adjustment of other controls may result in damage and will require extensive work by a qualified technician to restore the product to its normal operation;
 - If the product has been dropped or damaged in any way;
 - If the product exhibits a distinct change in performance – this indicates a need for service.

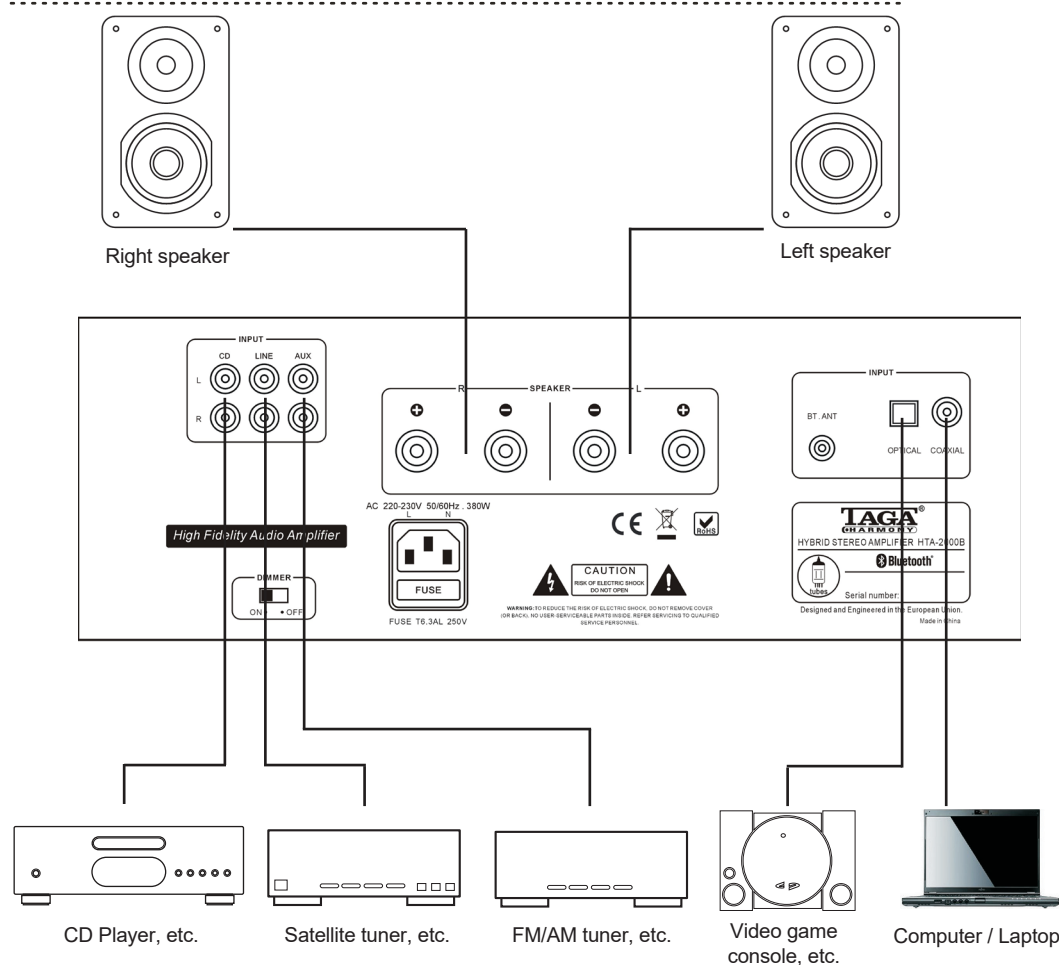
17. **Replacement Parts** – When replacement parts are required , be sure the technician has used replacement parts specified by the manufacturer or have the same characteristics as the original part. Unauthorized substitutions may result in fire, electric shock , or other hazards.

18. **Safety Check** – Upon completion of any service or repairs to this product, ask the service technician to perform safety checks to determine that the product is in proper operating condition.

19. **Wall or Ceiling Mounting** – The product should be mounted to a wall or ceiling only as recommended by the manufacturer.

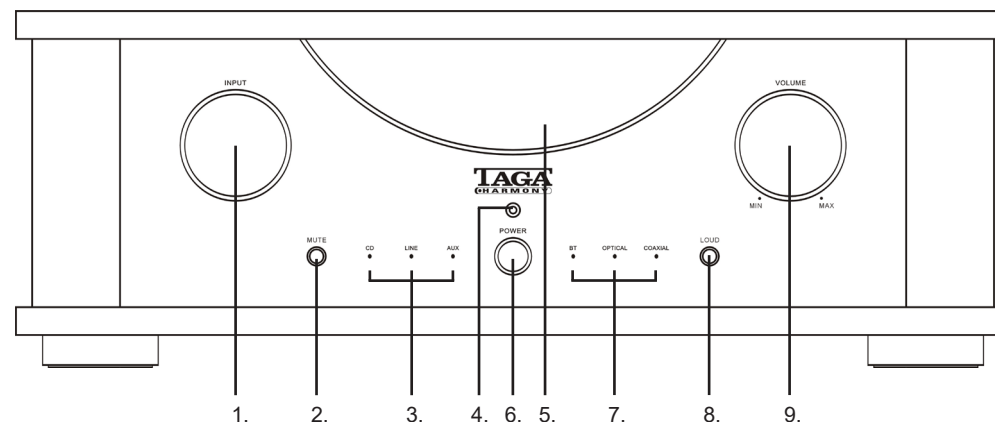
20. **Heat** – The product should be situated away from heat sources such as radiators , heat registers , stoves, or other products (including amplifiers) that produce heat.
- 4

System set-up



Vacuum Tube Amplifier Instructions

Front panel



1. INPUT Selector

By rotating this knob you can choose the desired audio source. Make sure the audio source is properly connected to the rear panel inputs. The selected source is indicated by one of Led indicators on the front panel.

2. MUTE Button

During playback press this button to stop amplifier audio output (no sound will be audible), press it again to recover the audio signal output back.

3. CD / LINE / AUX Led Indicators (analog inputs)

After the audio source is selected by the Input knob then the corresponding LED Indicator will light up.

4. Remote Control Sensor

It receives command signals transmitted by the remote control.

5. Vacuum Tubes Window

Check DIMMER switch description to learn more about the backlight of the vacuum tubes window.

6. POWER Button

Press this button to power on the amplifier, press it again to power it off.

Before powering on the amplifier make sure the system is hooked up properly.

Pay attention to connecting the polarity of speakers correctly (RED + with RED +, BLACK - with BLACK -). Rotate the Volume knob to its minimum position and power on the amplifier.

7. BT (Bluetooth®) / OPTICAL / COAXIAL Led Indicators (digital inputs)

After the audio source is selected by the Input knob then the corresponding LED Indicator will light up.

8. LOUD Button

Press the Loudness compensation button to increase the level of the high and low frequencies - it is intended to be used at low listening levels (using at high volume levels can damage the amplifier and/or speakers - it may void your warranty).

Press the button again to get back to regular amplifier settings.

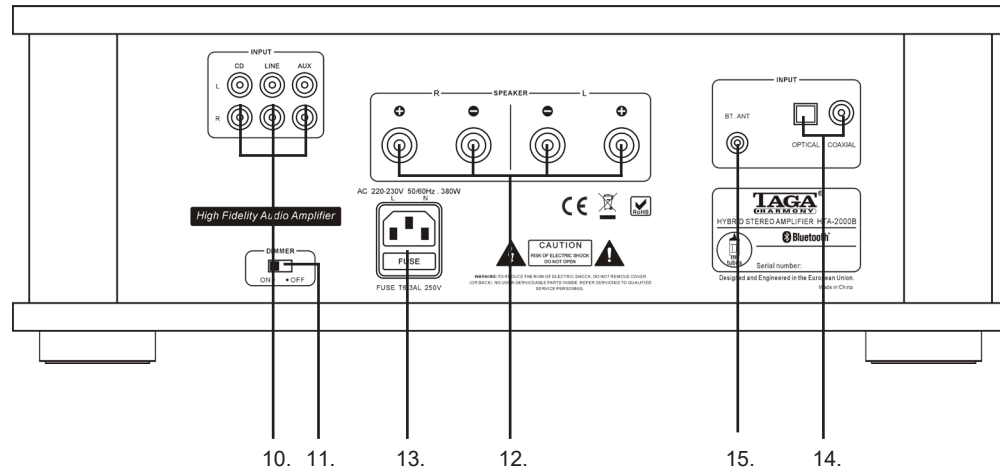
9. VOLUME Control

By rotating this knob clockwise you can increase output volume level.

By rotating it counterclockwise the output volume level is decreased.

Vacuum Tube Amplifier Instructions

Rear panel



10. CD / LINE / AUX Line stereo analog inputs

Connect here analog audio sources using RCA interconnects (CD players, FM/AM tuners, Satellite tuners etc.).

11. DIMMER Switch

Select ON to switch on the backlight of the vacuum tubes window and OFF to switch it off.

12. SPEAKER (Speakers Output Terminals)

Connect your speakers to these terminals using speaker cables. Pay attention to connecting the polarity of speakers correctly (RED + with RED +, BLACK - with BLACK -).

Before connecting your speakers make sure that the amplifier is switched off.

Please refer to your speakers' instruction manual for more information.

WARNING! This amplifier accepts only speakers with impedance from 4 ohm to 8 ohm. Connecting the speakers outside this range can burn the amplifier - it may void your warranty.

13. AC Input and Fuse

14. OPTICAL / COAXIAL Digital inputs

Connect here digital audio sources (CD/DVD/BluRay players, computers/laptops, video game consoles etc.) using a digital fiber optic cable (OPTICAL input) or a digital coaxial cable (COAXIAL input).

15. BT (Bluetooth®) Antenna input

Bluetooth®

Bluetooth® Connection

- After the amplifier is switched on - the built-in **Bluetooth®** receiver is waiting to be paired with a **Bluetooth®** source.

- Select BT input by rotating the Input selector knob – the BT LED indicator will light up.

- Select **Bluetooth®** on your audio source (smartphone, laptop etc.) and start scanning for available **Bluetooth®** devices.

- After a short time “HTA-2000B” will appear on the screen of your audio source. Select “Pair” on your audio source to connect with the amplifier.

- HTA-2000B will now be ready to play your music wirelessly within a range of approximately 7 meters. Start playback on your audio source.

Note: Please refer to your audio source user instruction for details on operating the **Bluetooth®**. Operation and names of specific functions can vary on different devices.

Important Notes - Bluetooth® Connection

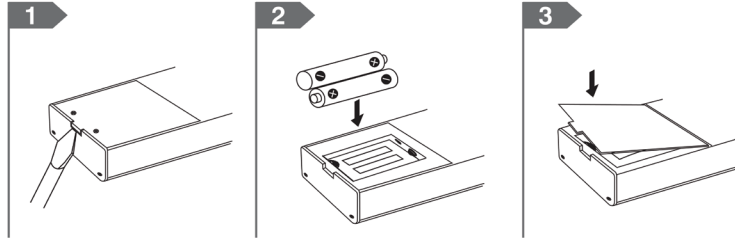
- As long as the amplifier is not switched off for longer than 10 seconds – the current **Bluetooth®** connection is active (even if you change the input). After that time the connection is lost and you will have to repeat the pairing procedure.

- When you move away from the working range of the HTA-2000B **Bluetooth®** receiver for longer than 60 seconds, the current **Bluetooth®** connection will be lost and you will have to repeat pairing procedure. Within 60 seconds the connection can be automatically reconnected.

- When you want to use another **Bluetooth®** audio source than currently active, you have to disconnect the active connection and start the **Bluetooth®** connection procedure.

Remote Control Instructions

Battery Installation

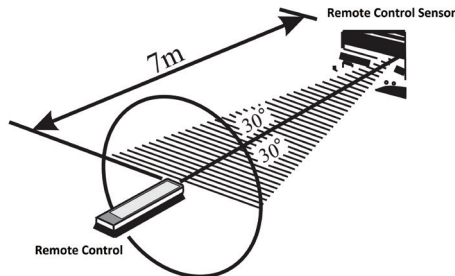


1. Open the cover of the battery compartment.
2. Insert two AAA batteries into the battery compartment. Carefully follow the polarity diagram inside the battery compartment (positive + and negative - symbols).
3. Replace the cover.

Note:

- Always use AAA batteries and do not use the rechargeable batteries.
- Do not mix new batteries with old batteries or different kinds of batteries.
- If the batteries run out, remove the old batteries and replace them with new ones within several minutes.
- If the batteries are placed incorrectly, they can cause explosion.
- Remove the batteries if the remote control is not used for a long period of time.
- Do not handle and store the batteries together with metallic tools.

Operating Range



Use the remote control within a range of 7 meters from the amplifier and angles of up to 30 degrees aiming at the remote control sensor.

Note: Exposing the remote control sensor to direct sunlight or strong light may cause faulty operation.

Remote Control Instructions

Remote Control – Functions

• **MUTE** - During playback press this button to stop amplifier audio output (no sound will be audible), press it again to recover the audio signal output back.

• **CD / AUX / OPTICAL / LINE / BT / LINE** – Press these buttons to select the audio source then the corresponding LED Indicator will light up.

• **VOLUME** - Press button ▼ to decrease volume and ▲ to increase volume level.

