

Kit Contents

Hybrid Amplifier	1EA
USB Cable	1EA
Bluetooth® Antenna	1EA
Power Cord	1EA
Instruction Manual	1EA


Specifications

Power Output	2x45W RMS @ 40hm 2x35W RMS @ 60hm 2x26W RMS @ 80hm
Vacume Tubes	6N2 (HTA-700B), 12AX7 (HTA-700B SE)
THD	=< 0.1%
Signal/Noise ratio	>= 88 dB
Headphone Impedance	32-320Ω
Headphone output	1W 160Ω
Frequency response	20Hz ~ 28kHz
Inputs	CD RCA, USB (for PC)
Outputs	Pre-Out stereo RCA
Streaming audio	Bluetooth® v4.0, aptX®
USB supported data	24bit 192kHz
AC Power, Power consumption	230V 50Hz, 100W

Bluetooth® is a registered trademark of Bluetooth SIG, Inc.
We reserve the right to change the technical data and the design of the product without notice as a result of further development.



Your product is marked with the symbol as showed on the left.
For EU (European Union) member users:
This product has been tested and found in compliance with requirements of the European Community 2004/108/EC directive.



IMPORTANT !
Your product is marked with the symbol as showed on the left .
For EU (European Union) member users :
According to the WEEE(Waste electrical and electronic equipment) Directive, do not dispose of this product as household waste or commercial waste .
Waste electrical and electronic equipment should be appropriately collected and recycled as required by practices established for your country.
For information on recycling of this product, please contact you local authorities, your household waste disposal service or the shop where you purchased the product .

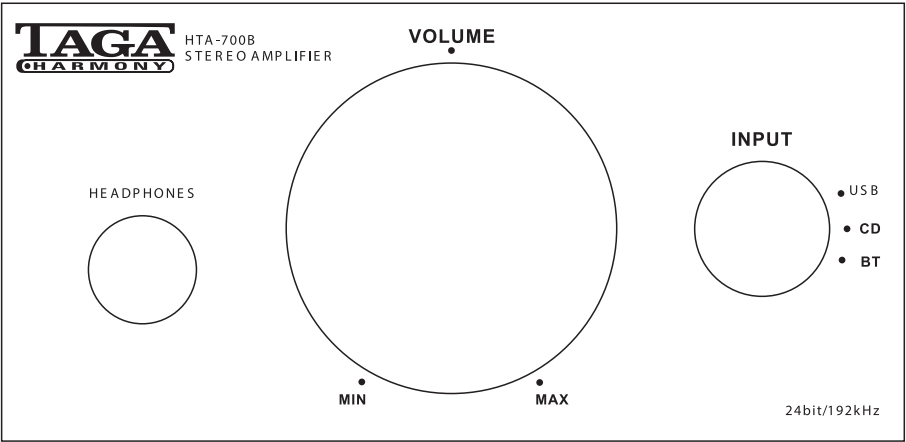
EU DISTRIBUTOR / IMPORTER:
POLPAK POLAND Sp. z o.o.
AL.JEROZOLIMSKIE 333A
05-816 REGUŁY k/WARSZAWY, POLAND
Email: sales@taga-audio.com

WORLDWIDE & CHINA DISTRIBUTOR:
TAGA Audio Technology Company LTD.
3F, Building C4, Shizhou Street Section, Baichen Road,
Shunde District, Foshan City, Guangdong Province,
China, 528313
Email: sales@taga-audio.com.cn



HTA-700B v.2, HTA-700B SE v.2

HYBRID INTEGRATED AMPLIFIER WITH
BUILT-IN DAC CONVERTER



Instruction Manual

Introduction

Thank you for purchasing this TAGA Harmony amplifier. This midi sized integrated amplifier offers impressive and powerful sound. Thanks to its **hybrid design** it provides richness of sound synonymous with pure valve amplification.

You can connect it directly to your computer through a USB input port and thanks to the built-in high-resolution premium **USB-DAC 24bit/192kHz (Cmedia CM6631A+Cirrus Logic CS4344)** you are able to change your digital music to a thrilling music experience.

To make your life even easier along with a standard RCA stereo input this amplifier offers wireless connectivity based on **Bluetooth®** wireless technology and **aptX®** audio codec (**CD-like quality**).

Using built-in **preamplifier output** allows an additional power amplifier or powered speakers to be hooked up to your system and a **headphone output** is a perfect choice for those who prefer discrete listening.

The **removable IEC power** cable gives you an option to upgrade your system with a premium audiophile power cable in any time.

This instruction manual provides **all** of the information that you need to know about your TAGA Harmony amplifier. Please read it carefully before you start using the unit.

Cleaning

Do not use strong or abrasive cleaners. Use a damp, soft cloth for cleaning.

Specifications

Full technical specifications are available on the **www.taga-audio.com** website.


Contents

Safety Instructions	3
Front and Rear Panel	5
Hooking up the Amplifier	6
Installation and Operation	7
Preamplifier Output (PRE OUT)	10
Troubleshooting	10
Kit Contents, Specifications	11


Safety Instructions

IMPORTANT


READ THIS SECTION CAREFULLY BEFORE PROCEEDING!




WARNING
RISK OF ELECTRIC SHOCK
DO NOT OPEN



WARNING: TO REDUCE THE RISK OF ELECTRIC SHOCK, DO NOT REMOVE COVER (OR BACK).NO USER-SERVICEABLE PARTS INSIDE. REFER SERVICING TO QUALIFIED SERVICE PERSONNEL .



The lightning flash with arrowpoint within an equilateral triangle warns of the presence of uninsulated “ dangerous voltage ” within the product’s enclosure that may be of sufficient magnitude to constitute a risk of electric shock to persons .



The exclamation point within an equilateral triangle warns users of the presence of important operating and maintenance (servicing) instructions in the literature accompanying the appliance .

WARNING:TO REDUCE THE RISK OF FIRE OR ELECTRIC SHOCK, DO NOT EXPOSE THIS APPARATUS TO RAIN OR MOISTURE , AND OBJECTS FILLED WITH LIQUIDS, SUCH AS VASES , SHOULD NOT BE PLACED ON THIS APPARATUS.

CAUTION: TO PREVENT ELECTRIC SHOCK, MATCH WIDE BLADE OF PLUG TO WIDE SLOT, FULLY INSERT.

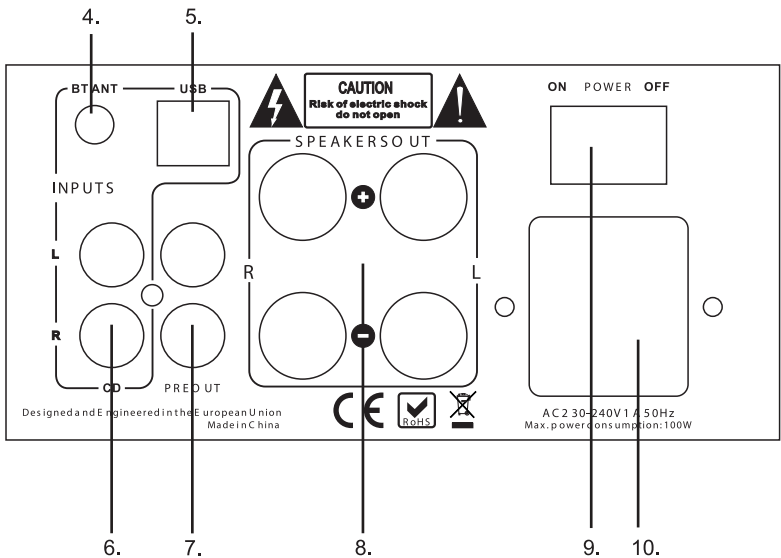
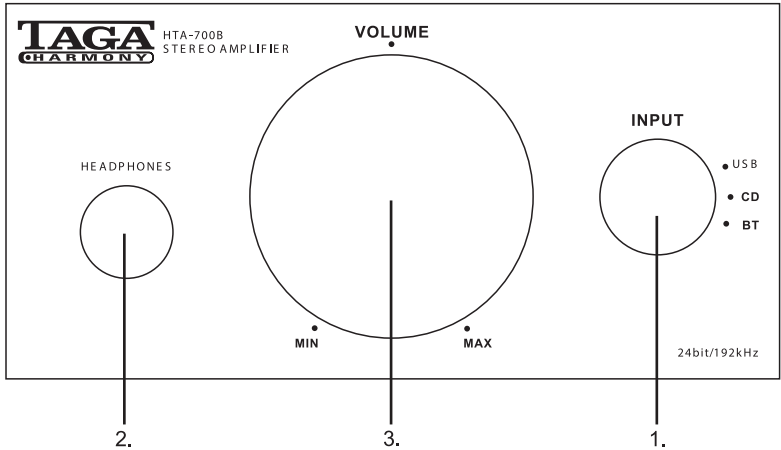
CAUTION: FOR CONTINUED PROTECTION AGAINST RISK OF FIRE, REPLACE THE FUSE ONLY WITH THE SAME AMPERAGE AND VOLTAGE TYPE. REFER REPLACEMENT TO QUALIFIED SERVICE PERSONNEL .

WARNING: UNIT MAY BECOME HOT . ALWAYS PROVIDE ADEQUATE VENTILATION TO ALLOW FOR COOLING . DO NOT PLACE NEAR A HEAT SOURCE , OR IN SPACES THAT CAN RESTRICT VENTILATION.

Important Safety Instructions

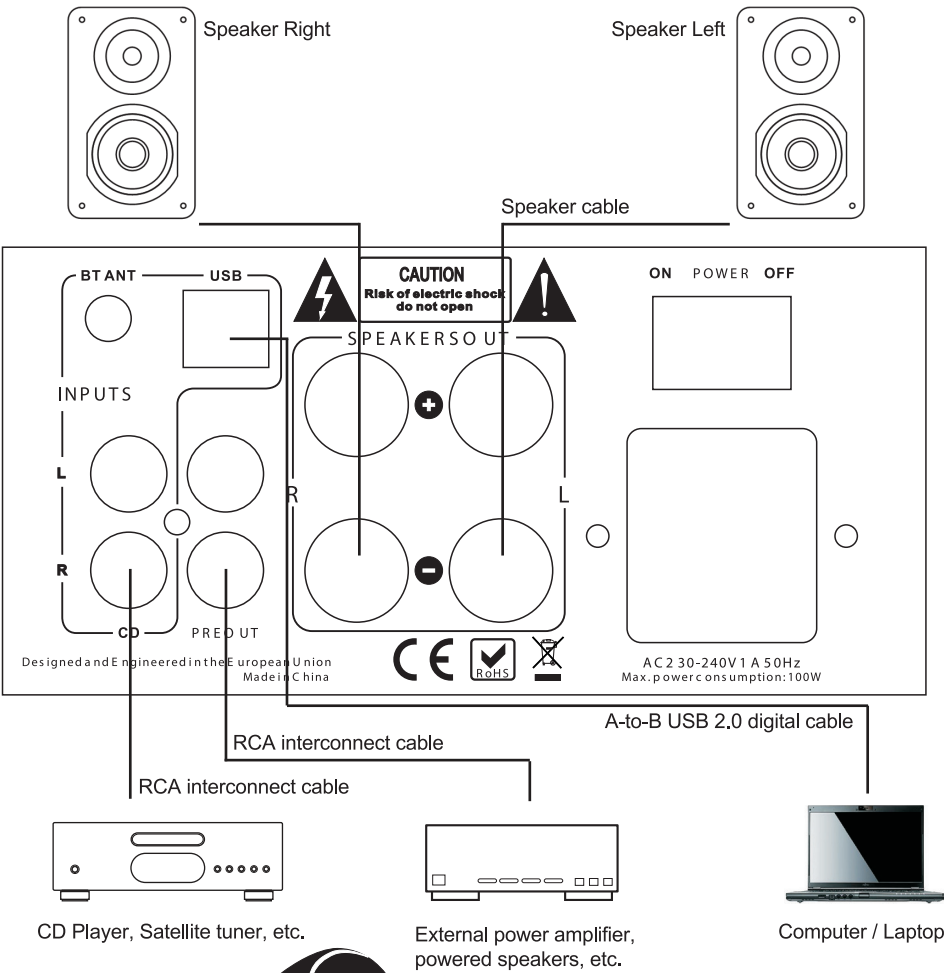
- 1. Read Instructions** – All the safety and operating instructions should be read before the product is operated.
- 2. Retain Instructions** – The safety and operating instructions should be retained for future reference.
- 3. Heed Warnings** – All warnings on the product and in the operating instructions should be adhered to.
- 4. Follow Instructions** – All operating and use instructions should be followed
- 5. Cleaning** – Unplug this product from the wall outlet before cleaning. Do not use liquid cleaners or aerosol cleaners. Use a damp, soft cloth for cleaning .
- 6. Water and Moisture** – Do not use this product near water – for example, near a bath tub, wash bowl, kitchen sink, or laundry tub; in a wet basement; or near a swimming pool; and the like .
- 7. Accessories** – Do not place this product on an unstable cart , stand, tripod , bracket or table. The product may fall, causing serious injury to a child or adult, and serious damage to the product. Use only with a cart, stand, tripod , bracket or table recommended by the manufacture, or sold with the product. Any mounting of the product should follow manufacture’s instructions and should use a mounting accessory recommended by the manufacture.
- 8. Ventilation** – Slots and openings in the cabinet are provided for ventilation and to ensure reliable operation of the product and to protect it from overheating, and these openings must not be blocked or covered. The openings should never be blocked by placing the product on a bed, sofa, rug, or other similar surface. This product should not be placed in a built-in installation such as a bookcase or rack unless proper ventilation is provided or the manufacture’s instructions have been adhered to.
- 9. Power Sources** – This product should be operated only from the type of power source indicated on the marking label. If you are not sure of the type of power supply to your home, consult your product dealer or local power company. For products intended to operate from battery power, or other sources, refer to the operating instructions .
- 10. Grounding and Polarization** – This product may be equipped with a polarized alternating-current line plug (a plug having one blade wider than the other). This plug will fit into the power outlet only one way. This is safety feature. If you are unable to insert the plug fully into the outlet, try reversing the plug. If the plug should still fail to fit, contact your electrician to replace your obsolete outlet. Do not defeat the safety purpose of the polarized plug .
- 11. Power-Cord Protection** – Power supply cords should be routed so that they are not likely to be walked on or pinched by items placed upon or against them , paying particular attention to cords at plugs, convenience receptacles, and the point where they exit from the product.
- 12. Lightning** – For added protection for this product during a lightning storm, or when it is left unattended and unused for long periods of time , unplug it from the wall outlet and disconnect the antenna or cable systems. This will prevent damage to the product due to lightning and power-line surges
- 13. Overloading** – Do not overload wall outlets, extension cords , or integral convenience receptacles as this can result in a risk of fire or electric shock
- 14. Object and Liquid Entry** – Never push objects of any kind into this product through openings as they may touch dangerous voltage points or short-out parts that could result in a fire or electric shock . Do not expose this apparatus to dripping or splashing, and ensure that no objects filled with water , such as vases , are placed on the apparatus .
- 15. Servicing** – Do not attempt to service this product yourself as opening or removing covers may expose you to dangerous voltage or other hazards. Refer all servicing to qualified service personnel.
- 16. Damage Requiring Service** – Unplug this product from wall outlet and refer servicing to qualified personnel under the following conditions:
 - When power supply cord or plug is damaged;
 - If liquid has been spilled, or objects have fallen into product;
 - If the product has been exposed to rain or water;
 - If the product does not operate normally by following the operating instructions. Adjust only those controls that are covered by the operating instructions as an improper adjustment of other controls may result in damage and will require extensive work by a qualified technician to restore the product to its normal operation;
 - If the product has been dropped or damaged in any way;
 - If the product exhibits a distinct change in performance – this indicates a need for service.
- 17. Replacement Parts** – When replacement parts are required , be sure the technician has used replacement parts specified by the manufacturer or have the same characteristics as the original part. Unauthorized substitutions may result in fire, electric shock , or other hazards.
- 18. Safety Check** – Upon completion of any service or repairs to this product, ask the service technician to perform safety checks to determine that the product is in proper operating condition.
- 19. Wall or Ceiling Mounting** – The product should be mounted to a wall or ceiling only as recommended by the manufacturer.
- 20. Heat** – The product should be situated away from heat sources such as radiators , heat registers , stoves, or other products (including amplifiers) that produce heat.

Front and Rear Panel

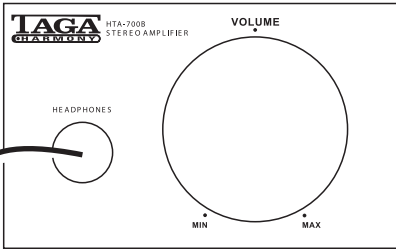


- 1. Input Selector
- 2. Headphones Output
- 3. Volume Control
- 4. Bluetooth® Antenna
- 5. USB Input Port
- 6. CD Input
- 7. Pre Output
- 8. Speakers Output
- 9. Power Switch
- 10. AC Input

Hooking up the Amplifier



Headphones



Installation and Operation

There are three options for connecting source devices.

1. Plug the supplied power cord into the electrical outlet.
 2. Make sure that the amplifier is switched off (Power Switch to OFF).
 3. Screw in a **Bluetooth®** antenna.
 4. Set the Volume Control to MIN.
 5. Connect your speakers to Speaker Output using speaker cables (not supplied with this amplifier). Pay attention to connecting the polarity of speakers correctly (RED + with RED +, BLACK - with BLACK -).
- Please refer to your your speaker instruction manual for more information.

WARNING! This amplifier accepts only speakers with impedance from 4 to 8 Ohms. Connecting speakers outside this range can burn the amplifier - it may void your warranty.

Option 1 (Connecting your computer via a digital USB input).

1. Set the Input Selector to USB.
2. Using a USB cable (supplied with this amplifier), connect your computer to the USB Input Port.

Computers with Windows®

1. Install the CMEDIA USB2.0 Audio Device driver – applies only for the Windows® operating system. (See pictures 1 and 2)
 - * The driver package as a compressed zip file is available for download on www.taga-audio.com on page of this product.
 - * After downloading extract the files from the zip file.
 - * Run the **Setup** file located in the unzipped folder and follow the installation instructions on the screen.
 - * Make sure to reset computer after the installation is completed.

2. Set Playback in your computer to “Speakers USB2.0 High-Speed True HD Audio” (See picture 3)
 - a) Choose Control Panel->Hardware and Sound->Sound->Manage Audio Devices;
 - b) Locate a device: “Speakers USB2.0 High-Speed True HD Audio” and highlight it;
 - c) Click “Set Default”

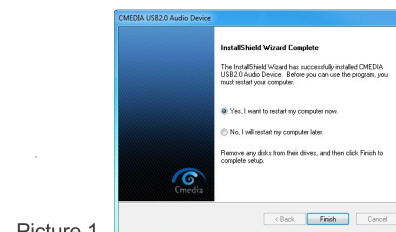
To enjoy the best sound quality, we suggest to change a default format of your audio device to “24 bit, 192000 Hz (Studio Quality)” – right-click on the “Speakers USB2.0 High-Speed True HD Audio” device, choose Properties and then Advanced tab and change Default Format.

Windows® XP: Set the Amplifier built-in “Audio Card” (USB 2.0 High-Speed True HD Audio) as “Default Audio Device” and the Computer Default Audio Device as “Desktop Speaker” (NOT “headphone”). Set the “Audio device” as the Amplifier built-in “Audio Card” (USB 2.0 High-Speed True HD Audio) in your Player software.

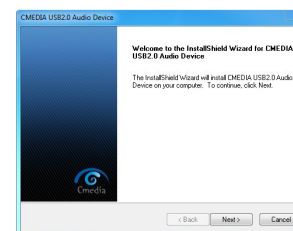
Installation and Operation

Trademark notice:

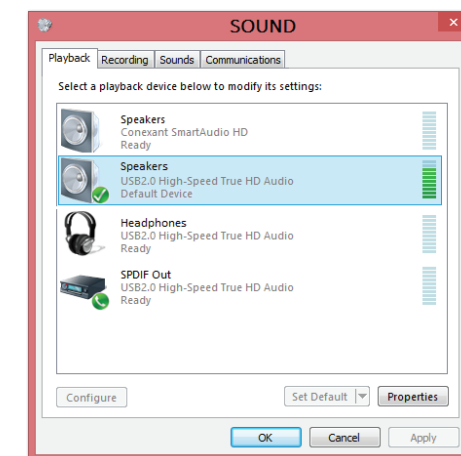
Windows® is a registered trademark of Microsoft Corporation in the United States and/or other countries.



Picture 1



Picture 2



Picture 3

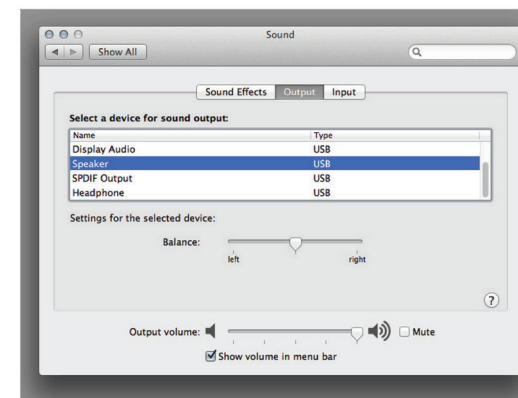
4. Switch on the amplifier (Power Switch to ON).
5. Start playing your music on the computer and control the output volume of the amplifier by regulating the Volume Control.

Note! High volume levels can damage your amplifier and/or speakers. This may void your warranty.

Note! Operation and user interface may vary depending on your Windows® version.

MAC® computers (no driver required)

1. Go to System Preferences, click on Sound and set Speaker to USB. Set the volume control to Maximum. Note! You may also need to adjust the volume in your music player software.



Installation and Operation

- 2. Switch on the amplifier (Power Switch to ON).
- 3. Start playing your music on the MAC® computer and control the output volume of the amplifier by regulating the Volume Control.

Note! High volume levels can damage your amplifier and/or speakers. This may void your warranty.

Trademark notice:

MAC® is a trademark of Apple Inc., registered in the U.S. and other countries.

Option 2 (Connecting an analog audio source - CD Player, Game Console, Satellite Tuner etc.)

- 1. Set the Input Selector to CD.
- 2. Using an RCA stereo interconnect cable (not supplied with this amplifier), connect your analog audio source (CD Player etc.) to the CD Input.
- 4. Switch on the amplifier (Power Switch to ON).
- 5. Start playing your music from the audio source and control the output volume of the amplifier by regulating the Volume Control.

Note! High volume levels can damage your amplifier and/or speakers. This may void your warranty.

OPTION 3 *Bluetooth*® Connection

- 1. Set the Input Selector to BT.
- 2. Switch on the amplifier (Power Switch to ON).
- 3. Select ***Bluetooth***® on your audio source e.g. Smartphone, Laptop etc. After a short time HTA-700B will appear on your audio source screen.
- 4. Select “Pair”.
- 5. HTA-700B will now be ready to play music wirelessly within a range of approximately 7 meters.
- 6. Start playing your music from the audio source and control the output volume of the amplifier by regulating the Volume Control.

Note! High volume levels can damage your amplifier and/or speakers. This may void your warranty.

Note! Please refer to your audio source user manual for details on operating the ***Bluetooth***® . Operation and names of specific functions can vary on different devices.

Note! When you want to use another ***Bluetooth***® audio source than currently active, you have to disconnect the active connection and start the ***Bluetooth***® connection procedure.

Preamplifier Output (PRE OUT)

This amplifier is equipped with a preamplifier output (PRE OUT). You can connect to it external equipment (power amplifier, powered speakers, active subwoofer etc.) using an RCA interconnect cable (not supplied with this amplifier). The PRE OUT is variable according to the Volume Control. Before connecting external equipment make sure that your amplifier is switched off (Power Switch to OFF) and the Volume Control is set to MIN.

Troubleshooting

If the unit fails to operate normally, check the following points to determine whether the fault can be corrected. If it cannot be corrected, or if the fault is not listed in the Problem column, disconnect the power cord and contact your authorised dealer or service centre for help.

Problem	Cause/Remedy
No power when unit is turned on.	<ul style="list-style-type: none">❑ Switch on the electric current at the socket❑ Check that the plug has been correctly inserted into the socket.❑ The internal fuse has blown and must be replaced by a qualified service technician.❑ The power cord has been damaged and must be replaced.❑ Input selection is not correct. Ensure input selection is set to the correct source.
No sound.	<ul style="list-style-type: none">❑ Input source volume is low. Increase the volume level on the source device.❑ No volume or low volume. Turn the volume control to increase the volume level.❑ Speakers are not properly connected to the unit. Check that they are connected correctly.
Sound is distorted	<ul style="list-style-type: none">❑ Volume level on speaker system is set too high. Decrease Volume.❑ Sound source is distorted. WAV and MID files are sometimes of poor quality. Therefore distortion and noise are easily noticed on high quality systems. Try a different audio source (e.g. CD Player)