

TAGA[®]
HARMONY

DIAMOND series

The Diamonds are a music lover's best friend!



Diamond F-200

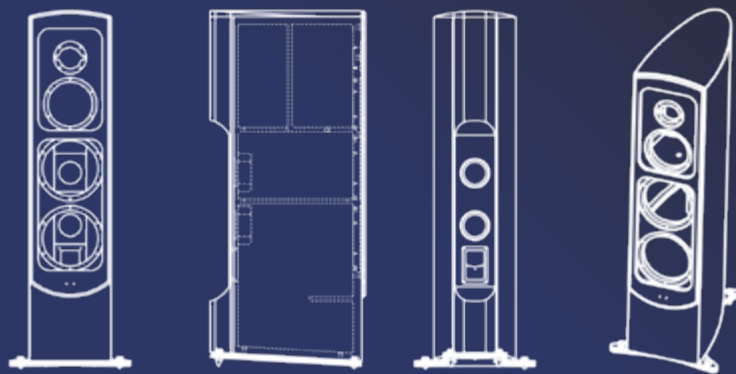
TAGA Harmony appointed a team of dedicated engineers for designing loudspeakers with extremely high-end look and top sound - the project with a code name „Diamond“.

Their goal was to use all the knowledge and experience in research, development and manufacturing of speakers to build an exceptional floorstanding speaker showcasing the best technology and achievements of TAGA Harmony.

The result is visible at the first glance on the beautifully crafted cabinet with its curved, clear, elegant lines and luxurious design accentuated with high grade African wood veneer painted with high-end clear gloss piano lacquer.

When you turn on the speakers you are immediately stunned by the exceptional Diamond F-200 sound - super natural, super dynamic, super clear and engaging... just super! **Taste it, Immerse in it, Love it!**

Speaker cabinet design and construction is one of the most critical elements influencing sound performance.



Based on our TLIE technology we have developed a new high-end solution to even more increase stiffness and limit any unwanted resonances of the cabinet. The new technology is called **S-TLIE (Super Taga Low Interference Enclosures)**.

Super rigid and thick 25mm MDF boards were used for side, rear, top and bottom walls and 30mm for the baffle (front panel). The internal structure was divided in two chambers in an approximate ratio 80% of volume for woofers and 20% for a midrange and tweeter. It allows much better and independent tuning of the low and mid-high sections.

To keep elegant and sleek appearance of the front panel there are no grill sockets thanks to a magnetically mounted grill.

Internal bracing is used to further strengthen the whole structure

and achieve even greater rigidity.

The walls are firmly anchored to the 80mm backbone beam highly strengthening the whole construction.

The bent shape of the side walls as well as the curved top play a significant role in lowering unwanted vibrations, diffraction, turbulences and standing waves effect.

The 2-layer metal base increases isolation from the floor, the transparency of sound and provides better definition and the basis for the bass. The whole cabinet is tilted back slightly to time-align all the drivers - it brings the tweeter's output into the best and correct alignment.

Diamond B-60 v.2

After a tremendous success of the Diamond F-200 we decided to expand the series with reference bookshelf speakers Diamond B-60 v.2. The same ultra-high-end sound now embedded in compact size handcrafted cabinets.

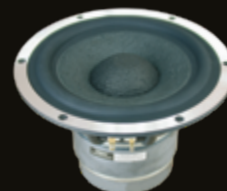




The high-end 30mm **O-TPTTD (Oversized Taga Pure Titanium Tweeter Dome)** tweeter with two magnets (Φ80 / Φ70) is 20% bigger than in our Platinum Special Edition series to allow even higher power handling and more accurate, clear, smooth and detailed performance. It has exceptional precision and works with ultra-extended high frequency response up to 33 kHz (±3dB). The **E-TPAF** faceplate helps even further dispersion of high frequencies.



The **E-TPACD (Extended Taga Pure Aluminum Cone Driver)** midrange (aluminum chassis, oversized 2-magnet structure Φ100 / Φ90) moves very fast and frequently allowing mid-range frequencies to be very rich, spacious and sweet. The extended low and high frequency range (46Hz – 18kHz) helps overlapping with frequencies of the woofers and the tweeter to offer the best sound consistency.



The **TNPPCD (Taga Non-pressed Paper Cone Driver)** bass and bass / midrange drivers are equipped with oversized magnets (three in the F-200: 2x Φ123 + Φ100; and Φ120 with a copper cap in the B-60 v.2) and aluminum chassis. They are extremely rigid and utilize vibration-free solutions. The heavy duty pure copper ribbon voice coil (4-layer in the F-200 and 2-layer in the B-60 v.2) allows high power handling. The bass is deep, precise and detailed while mid frequencies are very reach, wide and transparent.



Applies to the Diamond B-60 v.2



Diamond B-60 v.2

	Diamond F-200	Diamond B-60 v.2
Speaker Type	Floorstanding	Bookshelf
Drivers Configuration	Tweeter 30mm (1.18") O-TPTTD E-TPAF Midrange 165mm (6.5") E-TPACD Bass 2 x 203mm (8") TNPPCD	Tweeter 30 mm (1.18") O-TPTTD, E-TPAF Bass / Midrange 165 mm (6.5"), TNPPCD
Recommended Amplifier Power	100 - 400W	50 - 200W
Sensitivity	91dB	90dB
Crossover Points	450Hz, 4kHz	3.7kHz
Impedance	6ohm	6ohm
Frequency Response	30Hz - 33kHz (±3dB)	36Hz - 33kHz (±3dB)
Dimensions (H x W x D)	120 x 28 x 52 cm	41 x 23 x 34.7 cm
Net Weight	112 kg / pair	26.6 kg / pair
Finishes	Real wood veneer colors: African walnut veneer with clear gloss piano lacquer Ebony veneer with clear gloss piano lacquer Rosewood veneer with clear gloss piano lacquer	

Floorstanding models: The height excluding spikes and including a base. The weight including a base.



REFERENCE CLASS



BEST BUY



RECOMMENDATION

